



Gedrehte Lötteile für gedruckte Schaltungen

Pièces tournées à souder pour circuits imprimés

Turned soldering parts for printed circuitry

Werkstoff:

MS = Messing

Matière:

MS = laiton

Material:

MS = brass

Oberflächenbehandlung:

Code

Traitements de surface:

Code

Surface-plating:

Code

bl = blank (0)
ag = versilbert (1)
au = vergoldet (2)
sn = verzinkt (8)

bl = brut (0)
ag = argenté (1)
au = doré (2)
sn = étamé (8)

bl = clean (0)
ag = silver-plated (1)
au = gold-plated (2)
sn = tin-plated (8)

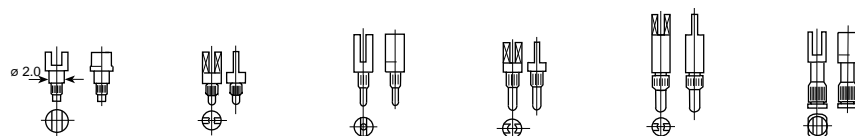
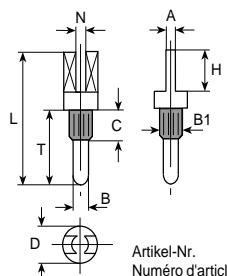
Bestellbeispiel:

Exemple de commande:

Example of order:

805.68

(805 MS sn)



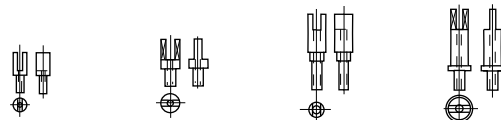
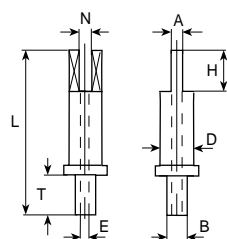
Artikel-Nr.
Numéro d'article
Part-No.

Print Bohrung
Trou
Hole

Stand.-Packg.

Werkzeuge
Outils / Tools

Artikel-Nr. Numéro d'article Part-No.	805.6() MS	810.6() MS	815.6() MS	820.6() MS	825.6() MS	750.6() MS
Print Bohrung Trou Hole	Ø 1.25/1.3	Ø 1.3	Ø 1.3/1.35	Ø 1.3	Ø 1.3	Ø 2.4
T	2.6	3.0	4.5	5.0	5.2	6.0
L	6.5	7.0	9.5	9.0	13.0	10.0
D	Ø 3.0	Ø 2.5	D Ø 2.5	D Ø 2.5	D Ø 2.5	D Ø 2.2
N	1.8	N 1.0	N 0.8	N 1.0	N 0.9	N 1.2
H	1.6	H 2.8	H 3.8	H 2.8	H 2.8	H 3.0
A	-	A 0.7	A -	A 0.7	A 0.8	A -
B1	Ø 1.25	B1 Ø 1.3	B1 Ø 1.35	B1 Ø 1.3	B1 Ø 1.3	B1 Ø 2.45
C	1.6	C 1.6	C 2.0	C 2.0	C 2.0	C 5.5
B	Ø 1.14	B Ø 1.0	B Ø 1.0	B Ø 1.0	B Ø 1.0	B Ø 2.5
Stand.-Packg.	2000	2000	1000	1000	1000	1000
Werkzeuge Outils / Tools	-	1035/75	-	1035/75	1035/75	-



Artikel-Nr.
Numéro d'article
Part-No.

Print Bohrung
Trou
Hole

Stand.-Packg.

Werkzeuge
Outils / Tools

Artikel-Nr. Numéro d'article Part-No.	735.6() MS	738.6() MS	740.6() MS	742.6() MS
Print Bohrung Trou Hole	Ø 1.0	Ø 1.5	Ø 1.2/1.3	Ø 1.5
T	2.2	T 2.2	T 3.8	T 2.5
L	5.4	L 6.2	L 10.0	L 10.7
D	Ø 1.8	D Ø 2.5	D Ø 2.4	D Ø 2.5
N	0.7	N 0.8	N 1.2	N 0.8
H	2.0	H 2.8	H 2.0	H 2.6
A	-	A 0.7	A -	A 0.7
E	Ø 0.7	E Ø 1.0	E Ø 0.8	E Ø 0.9
D1	-	D1 -	D1 2.0	D1 3.0
B	Ø 1.0	B Ø 1.5	B Ø 1.24	B Ø 1.5
Stand.-Packg.	2000	1000	1000	1000
Werkzeuge Outils / Tools	-	-	-	-



Vogt Verbindungstechnik

Gedrehte Lötteile für
gedruckte Schaltungen

Pièces tournées à
souder pour circuits
imprimés

Turned soldering parts
for printed circuitry

Werkstoff:
MS = Messing

Matière:
MS = laiton

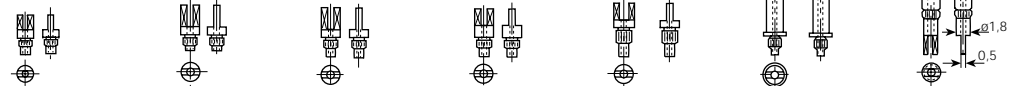
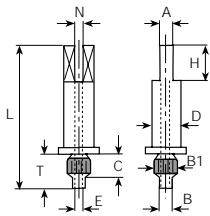
Material:
MS = brass

Oberflächenbehandlung: Code
bl = blank (0)
ag = versilbert (1)
au = vergoldet (2)
sn = verzinkt (8)

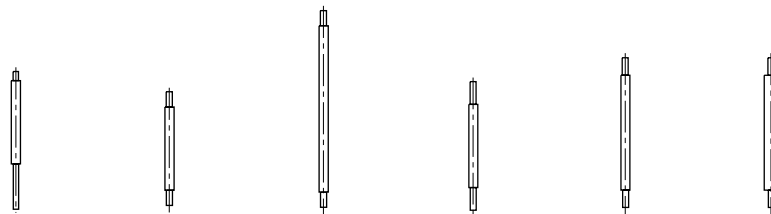
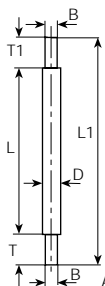
Traitements de surface: Code
bl = brut (0)
ag = argenté (1)
au = doré (2)
sn = étamé (8)

Surface-plating: Code
bl = clean (0)
ag = silver-plated (1)
au = gold-plated (2)
sn = tin-plated (8)

Bestellbeispiel:
Exemple de commande: 755.68
Example of order: (755 MS sn)



Artikel-Nr. Numéro d'article Part-No.	755.6() MS	760.6() MS	762.6() MS	765.6() MS	768.6() MS	770.6() MS	775.6() MS
Print Bohrung Trou Hole	Ø 1.3	Ø 1.3	Ø 1.3	Ø 1.5	Ø 1.3	Ø 1.3	Ø 2.0
T	2.2	2.0	2.6	2.6	3.2	2.5	6.0
L	5.2	6.0	6.6	6.6	7.2	10.7	11.0
D	Ø 1.8	Ø 2.5	Ø 2.5	Ø 2.5	Ø 2.5	Ø 2.5	Ø 2.4
N	0.8	0.8	0.8	1.1	1.0	0.8	0.8
H	2.0	2.8	2.8	2.0	2.8	2.6	2.8
A	0.7	0.8	0.8	0.7	0.7	0.7	0.9
E	Ø 0.8	Ø 0.8	Ø 0.8	Ø 1.0	Ø 0.8	Ø 0.8	Ø 0.5
D1	-	-	-	-	-	E1 3.0	-
B1	Ø 1.3	Ø 1.35	Ø 1.35	Ø 1.55	Ø 1.3	Ø 1.3	Ø 2.0
C	1.2	1.2	1.8	1.2	1.1	1.5	C 2.8/5.0
B	Ø 1.2	Ø 1.2	Ø 1.2	Ø 1.4	Ø 1.2	Ø 1.2	Ø 1.8
Stand.-Packg.	2000	2000	1000	1000	1000	500	500
Werkzeuge Outils / Tools	1035/76	1035/75	1035/75	1035/75	1035/75	1035/75	-



Artikel-Nr. Numéro d'article Part-No.	650.6() MS	655.6() MS	656.6() MS	657.6() MS	660.6() MS	661.6() MS
Print Bohrung Trou Hole	Ø 0.7	Ø 0.8	Ø 0.8	Ø 0.8	Ø 0.8	Ø 0.8
T	6.0	2.0	2.0	3.0	2.3	2.3
T1	1.2	2.0	2.0	3.0	2.3	2.3
L	11.0	11.0	22.0	11.0	15.2	15.2
L1	18.2	15.0	26.0	17.0	19.8	19.8
D	Ø 1.2	Ø 1.2	Ø 1.2	Ø 1.2	Ø 1.2	Ø 1.8
B	Ø 0.7	Ø 0.8	Ø 0.8	Ø 0.8	Ø 0.8	Ø 0.8
Stand.-Packg.	500	500	200	500	200	200
Werkzeuge Outils / Tools	-	-	-	-	-	-