

SONY[®]

Video Microscope

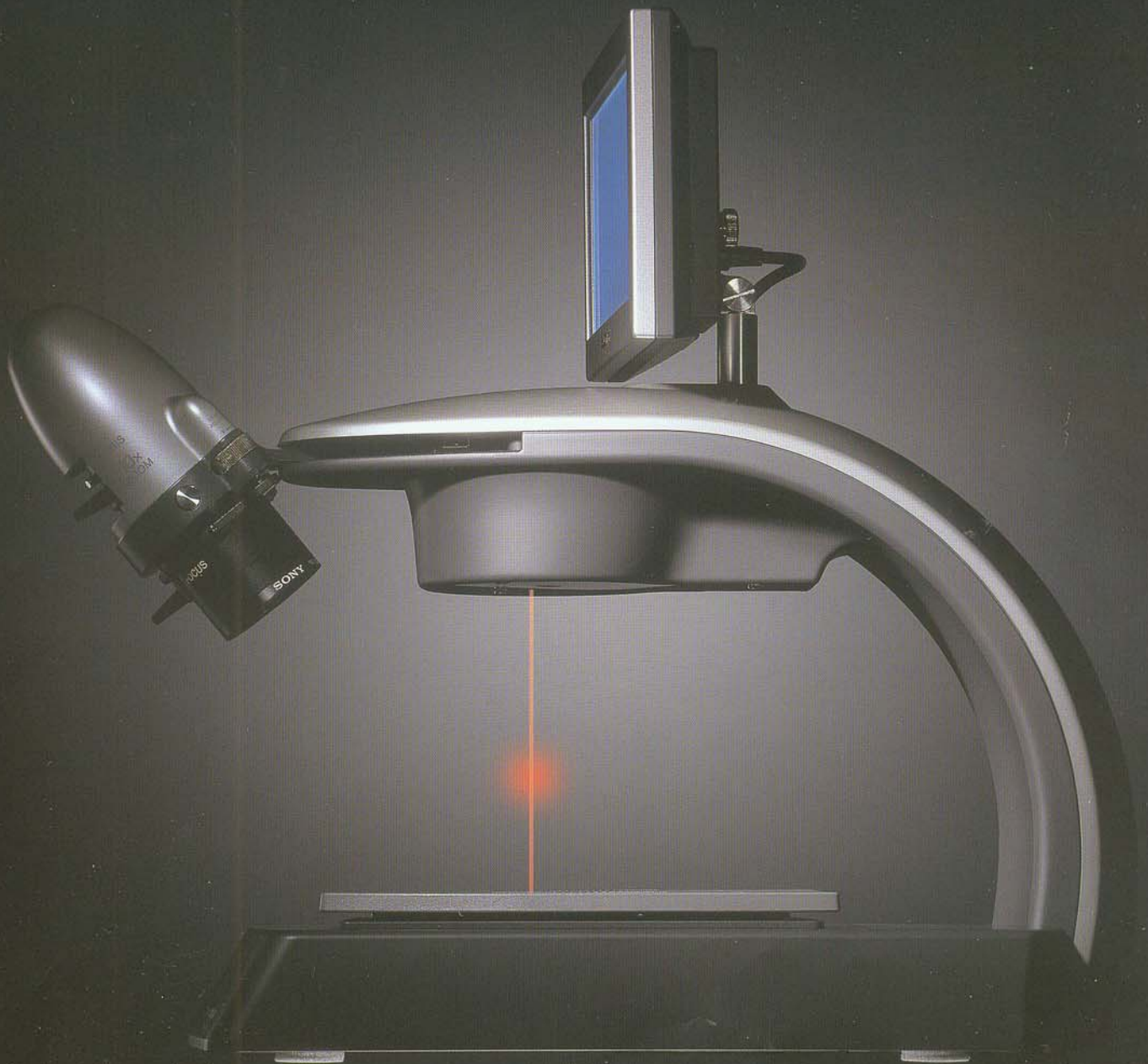
TW-TL1S/-TL10S

(NTSC)

TW-TL1SP/-TL10SP

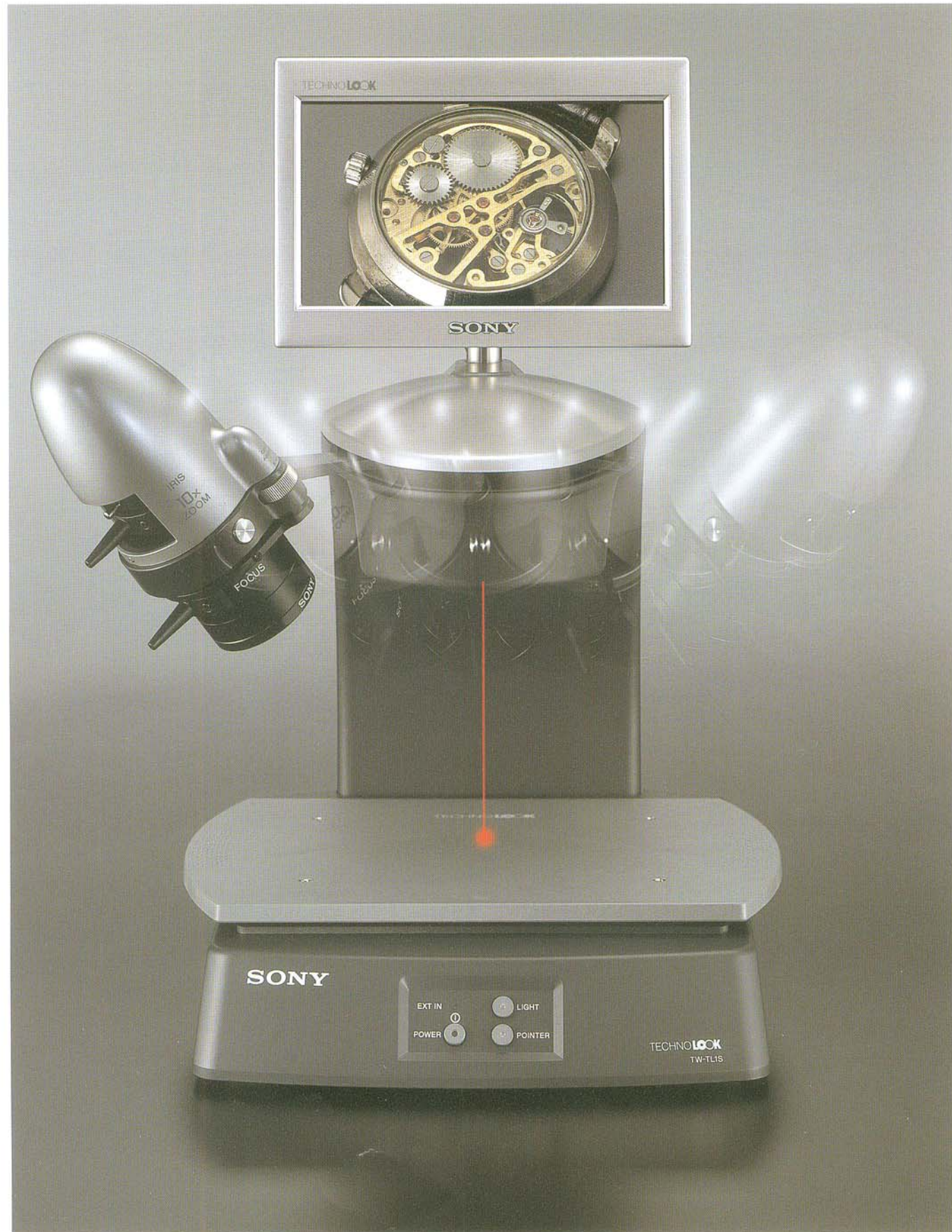
(PAL)

TECHNO**LOOK**



MAGNIFICATION, INSPECTION AND WORK of minute objects.

AN INFORMATION TOOL that can be used in a wide range of applications, that display a larger picture via an external monitor, and that can be connected to a personal computer.

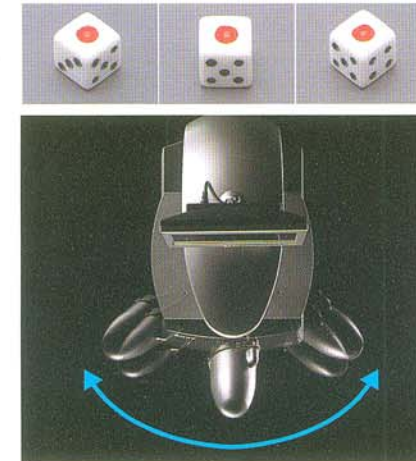


TECHNOLOOK is a registered trademark of Sony Technoworks Corporation.

All insets contained herein are simulated pictures only.

Viewing at an angle enables spatial observations.

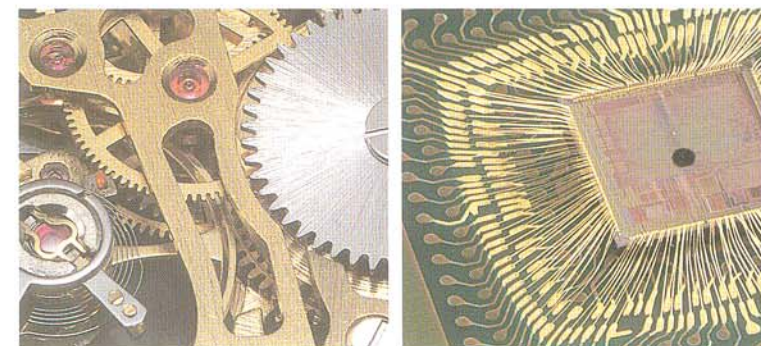
The CCD camera, mounted at about 45 degrees, enables natural spatial observations. By maintaining this angle in the vertical, but swinging the camera up to 45 degrees left and right, you can view the object from various angles without moving it. A center adjustment functions lets you observe objects of different heights without a shift in the center of view.



A high-powered zoom lens and great depth of focus.

The video microscope's zoom lens can display magnifications of from *4 to 40x on the display monitor. A maximum magnification, the microscope can observe a field of view of 3.0 mm x 3.2 mm. The lens offers a considerable depth of focus, giving a clear view over the entire picture. The microscope uses a flicker-free fluorescent lamp to illuminate the subject and provide steady, naturally colored images.

* 10 to 100x, 1.0mm x 1.2mm for TW-TL10S/-TL10SP.



A design that integrates camera, lighting and monitor.

The design that integrates the CCD video camera, fluorescent illumination, 7-inch LCD monitor means a compact video microscope that is 226 mm wide x 430 mm high x 445 mm deep. It is so easy to use on a table, and can start work straight away once connected to a power source. Take it to the workplace, meeting room, conference center, etc.

A tool for sending images to a PC.

The TW-TL1S video microscope has two video output terminals (composite/S video). The output from the camera can be played through a large-screen television, displayed on a movie screen via a projector, or input into a personal computer. The video microscope has a video input terminal (composite) permitting images stored in a peripheral device to be displayed on the microscope's LCD monitor.

Note: For details concerning the input of images into PCs, please contact your local Sony shop.

Applications



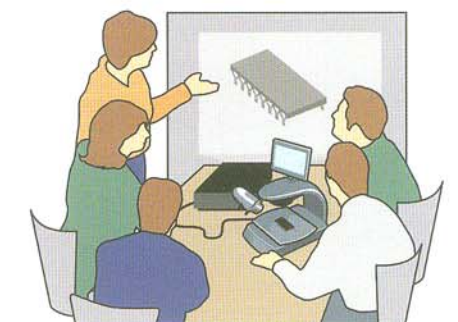
Observe samples from various angles



Magnify the images by external monitor



Wide space ease of work



Share images with others



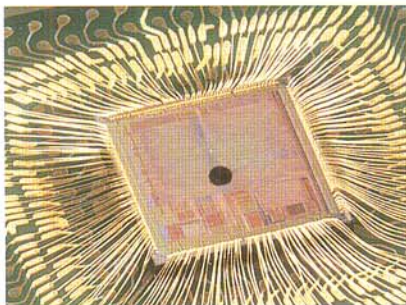
Capture images on computer

Specifications

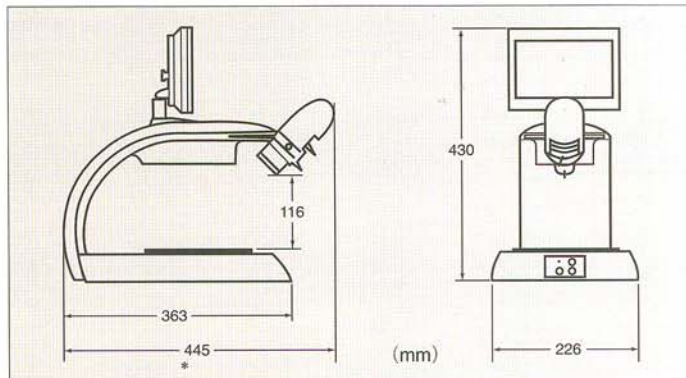
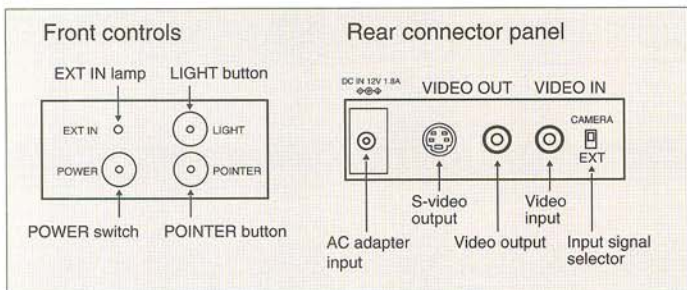
	TW-TL1S	TW-TL10S	TW-TL1SP	TW-TL10SP
	NTSC		PAL	
Power requirements	DC 12V (supplied AC adaptor)			
Power consumption	12VDC,1.8A (22W)			
Operating temperature	0°C to 40°C (32°F to 105°F)			
Storage temperature	-20°C to 60°C (-5°F to 140°F)			
Mass	6.0kg (13 lb 4 oz)			
Video signal system	NTSC color		PAL color	
CCD camera resolution	410,000 pixels			
Zoom	ratio:10x, Manual Minimum object distance:105mm			
On-screen magnification	Approx. 4 to 40 times the original size on the integral LCD monitor	Approx. 10 to 100 times the original size on the integral LCD monitor	Approx. 4 to 40 times the original size on the integral LCD monitor	Approx. 10 to 100 times the original size on the integral LCD monitor
Focus	Manual			
Iris	Manual			
Positional adjustment	Laser pointer			
LCD monitor	7-inch TFT liquid-crystal display			
Lighting	Fluorescent lamp			
Video input	Pin jack (x1)			
Video output	Pin jack (x1)			
S-video output	4-pin mini DIN (x1)			
Supplied accessories	AC adaptor (x1) (AC power cable 1.8m (x1)) Table:250 (W) x196 (D) x7.5 (H) mm Lens cap (x1), Lens filter (x1)			

Compare 40x image to 100x image.

40x
TW-TL1S/-TL1SP



100x
TW-TL10S/-TL10SP



©2001 Sony Corporation. All rights reserved.
 Reproduction in whole or in part without written permission is prohibited.
 Features and specifications are subject to change without notice.
 All non metric weights and measures are approximate.
 TECHNOLOOK is a registered trademark of Sony Technetworks Corporation.
 Sony is a registered trademark of Sony Corporation.
 All other trademarks are the property of their respective owners.

Distributed by

Distributed By:

Tarapath Pty. Ltd

403 Victoria Street

Brunswick, Victoria, 3056

Australia

Tel. (03) 9380 8454 Fax. (03) 9380 8766

'01.08